

HSAJET® Controller Unit CU

The HSAJET CU is a high-resolution
Print Controller Unit



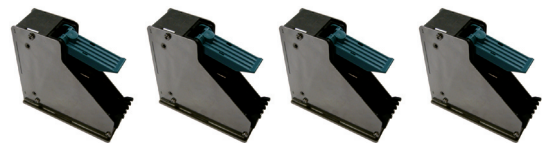
In combination with HSAJET printheads it has
the function of a stand-alone system.

The CU is equipped with LAN and Serial communication
allowing remote controlled variable printing.

THE CU HAS AN INTEGRATED
KEYBOARD & DISPLAY

A compact Controller Unit handling
up to 2" print height:

- HP TIJ 2.5 TECHNOLOGY
- UP TO 4 STALLS PER UNIT
- COMPACT STAND-ALONE CONTROLLER
- JOBS PRE-STORED ON CF CARDS
- ACCESS PARAMETERS FROM KEYBOARD
- SERIAL OR ETHERNET CONNECTION
- PROMPT FUNCTIONS
- REQUIRES A MINIMUM OF SKILL AND TRAINING
- IDEAL FOR INTEGRATION ON E.G.
WEB, INSERTERS, FOLDERS, COLLATORS ETC.



THE CU CONTROLS UP TO 4 HP PENS IN
ANY COMBINATION OF 1 AND 2 PEN HEADS,
OR SINGLE 3 OR 4 PEN HEADS.

Technical Details

CONTROLLER UNIT CU

KEY FEATURES - CU:

Integrated keyboard

- BITMAPS
- LOGO PRINTING
- COUNTER PRINTING
- DATE & TIME PRINTING
- BARCODE PRINTING
- MULTIPLE FONTS

Compared to the Tiny Controller Unit, the CU has the following extra features:

- EDIT VARIABLE CONTENT DIRECTLY
- INPUT ACCENTED CHARACTERS
- EDIT PARAMETERS ON UNIT
- HAVE MORE VARIABLE FIELDS
- CONTROL MORE HEADS (4 PENS)
- PRINT ON OTHER SIDE
- COMMUNICATE BY RS232 / ETHERNET
- PRINT VARIABLE BARCODES
- PROTECT ACCESS BY PASSWORD

Accessories:

- COMPACT FLASH CARD
- READER/WRITER FOR CF CARD
- SENSOR AND ENCODER
- BRIDGES AND BRACKETS

Resolution (DPI)	Max. speed (m/min)
600 x 600	38
300 x 300	76
300 x 150	306

Printing capability:

Max printheight/pen: 12.7 mm
Max printheight total: 50.8 mm

Variable data: Counter
Time
Date
Barcode
Text prompt

Graphics (PC): BMP / Jpeg
Distance to surface: 0.5 - 2.0 mm

Max print message length:

Dynamic, depending on font size and resolution.
Max possible length: 2.7 m

Interface: CF card, I/O connector
Serial / Ethernet
Product sensor 5-24V
Encoder input 5-24V

Technical Data - CU:

Power supply: 85 - 265V external
Dim (WxLxH): 155 x 210 x 90 mm
Weight: 1.4 kg

02/2010

DEALER:

Inkjet
Technology by  invent


HSA SYSTEMS
A UNIQUE IMPRINT

HSA Systems Denmark
DK-2740 SKOVLUDE | +45 4494 0222 || DK-5260 ODENSE S | +45 6610 3401

HSA Systems France
F-93160 NOISY-LE-GRAND | +33 1 48 15 50 50

www.hsasystems.com | mail@hsasystems.com